



# Fine Feathers

Newsletter of the Alberta Wildlife Carving Association

AUG 2024

A NEWSLETTER OF THE ALBERTA WILDLIFE CARVING ASSOCIATION.

## Message from the President

### President's Message

Enjoy the Summer with Alberta Wildlife Carving Association!

Highlights to Look Forward To:

- **Fall Classes:** From beginner/novice to intermediate/advanced, there's something for everyone.

- **Summer Success:** The AWCA summer class on carving a pileated woodpecker with Jeff Krete was a huge success with a record turnout.

- **Fall BBQ:** Join us for our new fall BBQ event! Sign up for classes, pay club dues, and enjoy the company of your fellow carvers.

- **New Website Launch:** We're excited to unveil our new, mobile-friendly website this fall. Stay tuned for important class information and explore the many benefits of the club.

- **Upcoming Class:** Don't miss the opportunity to enroll in Jean Minaudier's class on carving a Short-eared Owl before the fall BBQ.

- **Our Clubs Appreciation goes, To **John Stevenson.**** Who as a retiree of Suncor, turned his **volunteer time** with our club, into SunCares Reward Dollars, in the amount of \$2,000.00. These funds have been donated to our club.

**Thank you again to **John Stevenson, and Suncor Energy Inc.****

### **Mark Your Calendars and Stay Engaged!**

Join us and take your carving skills to the next level while enjoying the camaraderie of fellow enthusiasts. We can't wait to see you!

# IMPORTANT UP-COMING EVENTS

## **ALBERTA WILDLIFE CARVING ASSOCIATION**

[www.albertawildlifecarving.squarespace.com](http://www.albertawildlifecarving.squarespace.com)

**Alberta Wildlife Carving School (Fall Semester)**

## **JEAN MINAUDIER- 6 DAY CLASS**

### **CARVING AND PAINTING A MINIATURE SHORT EARED OWL**

**AUG. 26<sup>TH</sup>. To AUG 31<sup>ST</sup>. 2024 CARVING AT COUNTRY HAVEN**



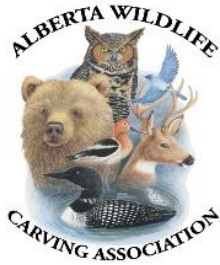
**\$700.00CAN (This price includes Tupelo cut-out, Eyes, Reference Pack and Lunches for the six days.)**

**COUNTRY HAVEN STUDIO IS LOCATED 30 MINUTES WEST OF EDMONTON NEAR ALBERTA BEACH**

**\$100.00 DEPOSIT REQUIRED UPON REGISTERING  
FINAL PAYMENT DUE JULY 1, 2024.**

See our website [www.albertawildlifecarving.squarespace.com](http://www.albertawildlifecarving.squarespace.com)

Or Contact BOB STEELE AT [cbsteele@telus.net](mailto:cbsteele@telus.net)



## ALBERTA WILDLIFE CARVING ASSOCIATION

### 1<sup>st</sup>. ANNUAL CARVING KICK-OFF BBQ.

At Country Haven Carving Studio



# BBQ.

SATURDAY SEPT. 14 STARTS AT 1:00 PM BBQ AT 3:00 PM

**53513 RRD 32 Lac Ste. Anne County**

**No Charge for ALL AWCA Members and Spouses**

**Hot Dogs and Smokies Will Be Served**

**Bring Your Own Chairs If You Have**

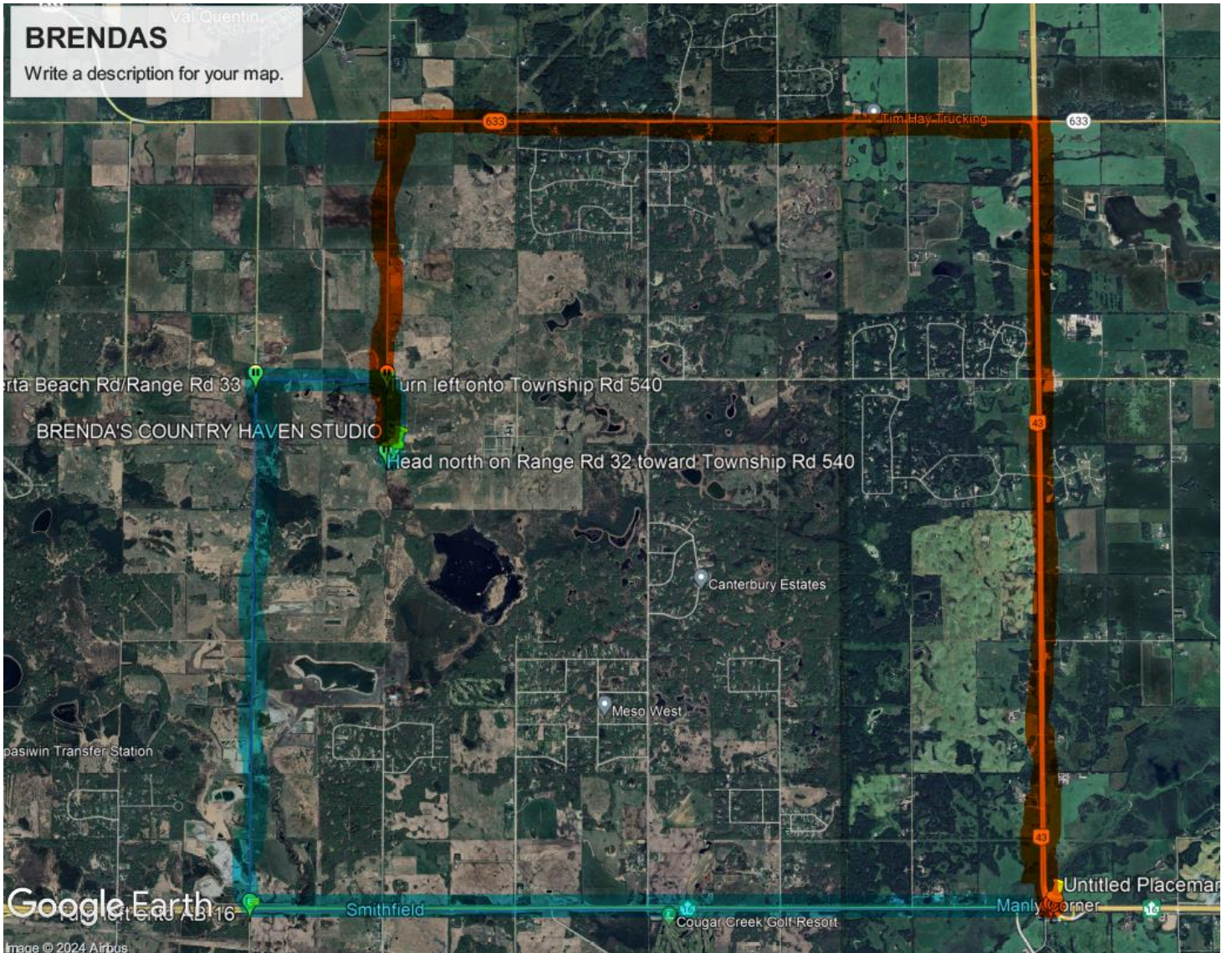
**Brenda's Class: Pick Up Mat'l for Your Class, starts Sept 24**

**Amiskwacyi classes pick up and start Oct 1**

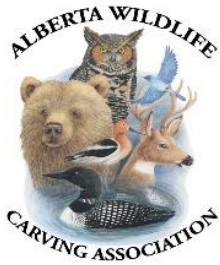
**John will also be accepting payment for classes.**

**SIGN UP WITH BRENDA FOR BBQ. 780 910-2615 OR EMAIL [bmitchell2788@gmail.com](mailto:bmitchell2788@gmail.com)**





**This map shows two ways to get to BRENDA'S starting from the junction of Hi-way 16 and Hi-way 43**



## **PRE-REGISTER FOR ALL CLASSES**

**Notify your instructor that you are attending the class**

**FOR 2025 FEES REMAIN UNCHANGED AND ARE AS FOLLOWS:**

**CLASS FEE: \$350.00 PLUS \$30.00 MEMBERSHIP FOR A TOTAL OF \$380.00**

**MEMBERSHIP ONLY: \$30.00**

**NEW MEMBERS MUST COMPLETE A MEMBERSHIP AND RELEASE FORM AVAILABLE ON THE AWCA'S WEBSITE: [albertawildlifecarving.com](http://albertawildlifecarving.com) - Home WHICH MUST BE SUBMITTED WITH YOUR PAYMENT.**

**PAYMENT OF CLASS FEES MUST BE PAID BY OCTOBER 1, 2024.**

**YOU CAN PAY IN PERSON AT AMISKWACIY ON SEPT 24, 2024**

### **Amiskwaciy Classes Pick Up and Start Oct 1**

**E-Transfers are preferred** and should be submitted to: [awcacarve@gmail.com](mailto:awcacarve@gmail.com)

If you must pay by cheque, make it payable to **Alberta Wildlife Carving**

**Association** and sent to:

Alberta Wildlife Carving Association

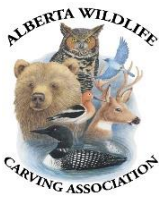
45-54519 Rge Rd 273

Sturgeon County, AB.

T8R 1X7

**ENSURE THAT YOU STATE WHICH CLASS YOU ARE PAYING FOR UNDER THE COMMENT SECTION ON THE E-TRANSFER OR ON THE CHEQUE.**

**Your receipt and membership card will be: E-MAILED TO YOU**



## ALBERTA WILDLIFE CARVING ASSOCIATION TUESDAY NIGHT CLASSES

### **DOWNEY WOODPECKER BEGINNER/NOVICE CLASS**

THE ALBERTA WILDLIFE CARVING ASSOCIATION IS PLEASED TO ANNOUNCE ITS FALL CARVING COURSE AT AMISKWACIY ACADEMY (101 AIRPORT ROAD EDMONTON)

STARTS ON TUESDAYS OCT 1 ST. TO APRIL FROM 6:00 PM TO 8:30 PM. FEE: \$350.00

WITH INSTRUCTOR **RYAN PUHLMANN** (587 590-8161) EMAIL: [puhlent@gmail.com](mailto:puhlent@gmail.com)



\*The images provided are representations of the finished carving and may not be identical.

**This class is designed for new and beginner carvers.**

Class Fees include: Class Instruction, Carving Blank, Instructions, Eyes, Paint. Additional fees may apply depending on carver choice (e.g. cast feet, bases, etc.) – as further outlined by the instructor.

RYAN will walk the new carver through the various stages of carving from selecting the best wood to which tools to use including, micro motors, burners and painting as well as the various techniques for all the skills required for wildlife carving.

Some of these skills will be stoning and burning techniques as well as making legs, mounting and presentation of your project.

Tool kits can be rented from the AWCA for 1st. year carvers not sure where to start. Kits are \$50.00 plus \$50.00 deposit.





## ALBERTA WILDLIFE CARVING ASSOCIATION TUESDAY NIGHT CLASS

### LOGGERHEAD SHRIKE

AT AMISKWACIY ACADEMY (101 Airport Road Edmonton)

Tuesdays Oct 1, 2024 to April 2025 from 6:00 PM to 8:30 PM. (SET-UP 5:30 to 6:00)

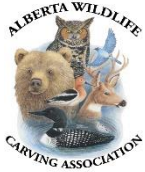
Cost \$350.00. Blanks, eyes and feet materials will be supplied.

THE ALBERTA WILDLIFE CARVING ASSOCIATION IS PLEASED TO ANNOUNCE ITS FALL  
CARVING COURSE.

WITH INSTRUCTOR'S BOB STEELE 780 464-4622 [cbsteele@telus.net](mailto:cbsteele@telus.net) and

WAYNE OLSEN 780 886-0073 [lwolsen@shaw.ca](mailto:lwolsen@shaw.ca)





## **ALBERTA WILDLIFE CARVING ASSOCIATION TUESDAY NIGHT CLASS**

### **MINIATURE RED SHOULDERED HAWK**

AT AMISKWACIY ACADEMY (101 Airport Road Edmonton)

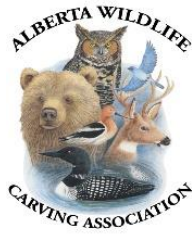
Tuesdays Oct 1, 2024 to April 2025 from 6:00 PM to 8:30 PM. (SET-UP 5:30 to 6:00)

Cost \$350.00. Blanks, eyes and feet materials will be supplied.

THE ALBERTA WILDLIFE CARVING ASSOCIATION IS PLEASED TO ANNOUNCE ITS FALL CARVING COURSE. WITH INSTRUCTOR GLENN MABER 780-907-0454 Email [gmaber@yahoo.com](mailto:gmaber@yahoo.com)







**ALBERTA WILDLIFE CARVING ASSOCIATION**  
**CARVING AT COUNTRY HAVEN**  
**Tuesdays from 10 AM to 3 PM.**

**BUFFALO BUST**

**Tuesdays from 10 AM to 3 PM.**

THE ALBERTA WILDLIFE CARVING ASSOCIATION IS PLEASED TO ANNOUNCE ITS FALL CARVING COURSE WITH INSTRUCTOR BRENDA MITCHELL 780-910-2615

Email [bmitchell2788@gmail.com](mailto:bmitchell2788@gmail.com)

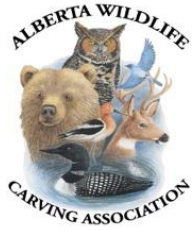
CLASSES ARE HELD AT COUNTY HAVEN STUDIO NEAR LAC ST. ANN

BLANKS, WILL BE SUPPLIED

COURSE STARTS SEPT 24 TO DEC.17, 2024

FEE: \$350.00





**ALBERTA WILDLIFE CARVING ASSOCIATION**  
**CARVING AT COUNTRY HAVEN**  
**Tuesdays from 10 AM to 3 PM.**

**CEDAR WAXWING, ONE WING OPEN**

**Tuesdays from 10 AM to 3 PM.**

THE ALBERTA WILDLIFE CARVING ASSOCIATION IS PLEASED TO ANNOUNCE ITS WINTER CARVING COURSE WITH INSTRUCTOR BRENDA MITCHELL 780-910-2615

COURSE OFFERED AT **COUNTRY HAVEN CARVING STUDIOS**

Email [bmitchell2788@gmail.com](mailto:bmitchell2788@gmail.com)

CLASSES ARE HELD AT COUNTY HAVEN STUDIO NEAR LAC ST. ANN

BLANKS, EYES, WILL BE SUPPLIED.

COURSE STARTS Feb 4 to April 29, 2025

FEE: \$350.00





**COUNTRY HAVEN MEADOWLARK CLASS**



**JEFF KRETE PILEATED WOODPECKER CLASS**





## ***TECHNICAL NOTES***

### **CARVING SEASON STARTS SOON**

It is time to get ready for the upcoming carving season to start, this is the time to do your annual maintenance of your carving equipment.

**Foredoms** check for damage, remove the sheath and apply grease to the cable, check your bits, clean and replace any damaged ones. Blow out the motor with Dust Off or air.

**Micro- motors** check for damaged cords or plugs, blow out the power box with dust off or air, inspect and clean your bits and burs.

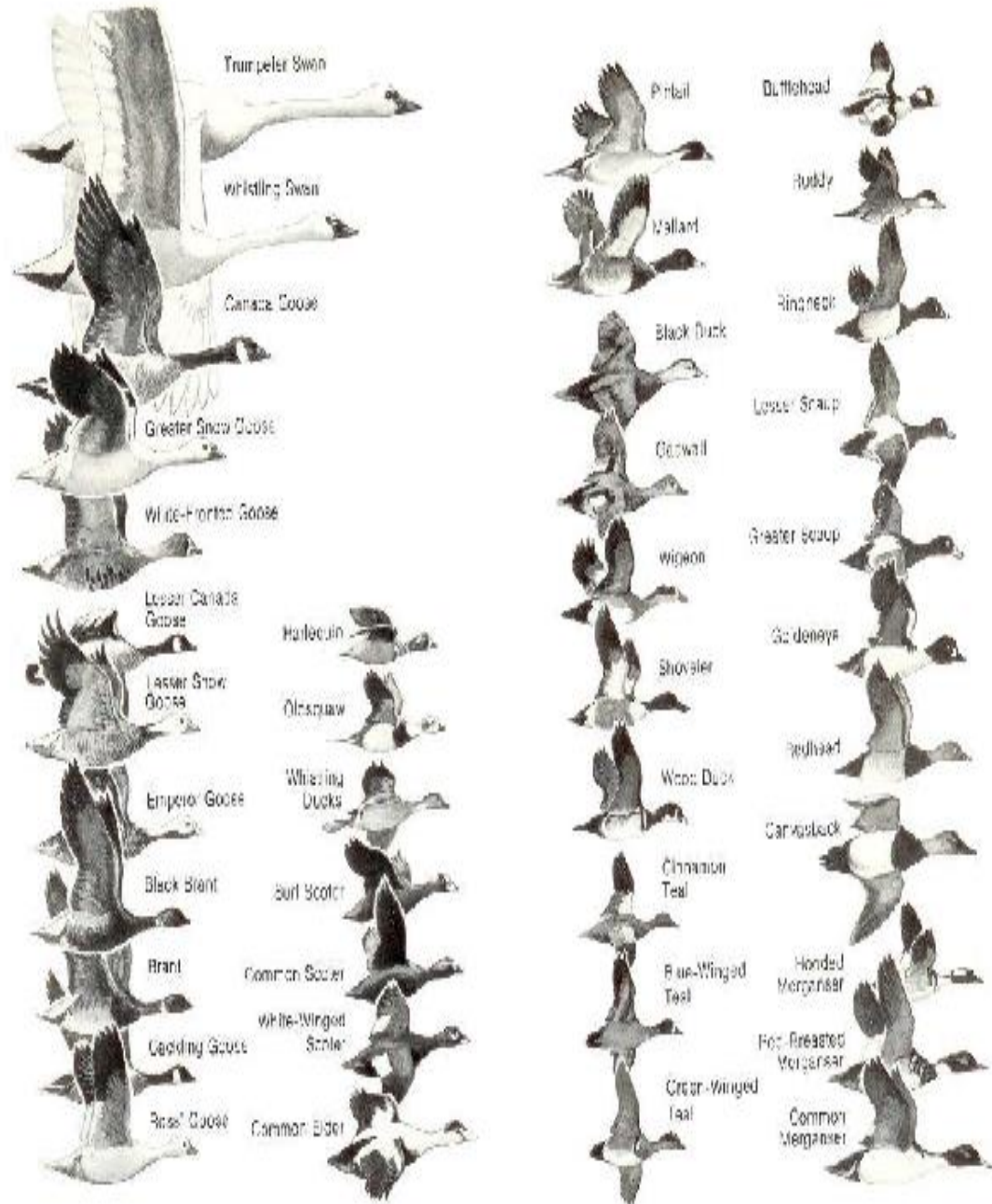
**Bits and burs cleaning** I like to use an ultra-sonic cleaner. First check and select the ones you want to clean then place them in the machine for 3 minutes, remove and inspect them, if some did not come clean, possible wood, puddy, glue or other items, I heat the bit or bur with a soldering torch then clean with a brass wire brush, be careful not to overheat the bit/bur. Once the contaminants have been dislodged run them through the ultra-sonic cleaner again.

**Burners and pens** Inspect and repair any damaged items burner pens should be cleaned and sharpened if required. They should be stored in the original tubes or a plastic protective box.

**Painting tools, air brushes and paint** these items should have been cleaned **immediately** after use, if not this could be expense and time consuming.



# DUCK AND GEESE COMPARISON





## **HABITAT HOBO**     *Spring grass*



**FINISHED BASE**



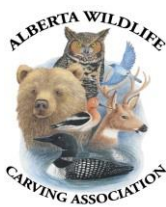
**GET YOUR STUFF READY**

1. Mix-up the Durham's water puddy and apply to the wood base cut-out.

2. Apply the various habitat featured items, play ground sand, coarse wood fibers, greenery, small rocks and sticks.
3. Embed all of the items into the puddy, once you are satisfied with the presentation, apply the glue using a pipette.

## NOTES

- A. You can make grass by cutting the bristles off a brush, dipping the in 5min. epoxy, then paint them suitable for the habitat.
- B. The glue or scenic cement you can buy at hobby shops or just make it with white wood glue and water.



## Alberta Wildlife Carving Association *CARVING YEAR 2024 / 2025*

**SEPT 14- CARVING KICK-OFF BBQ AT COUNTRY HAVEN STUDIO - STARTS AT 1:00  
BBQ AT 3:00 ALL A.W.C.A. members and family welcome.**

SEPT 24- TOOL & EQUIPMENT INSPECTION AT AMISKWACIY. & START COUNTRY HAVEN STUDIO

OCT 1- START OF CARVING AND FINAL DAY FOR CLASS SIGN UP AT AMISKWACIY & COUNTRY HAVEN STUDIO

OCT 8- REGULAR CARVING AT AMISKWACIY & COUNTRY HAVEN STUDIO

OCT 15- REGULAR CARVING AT AMISKWACIY & COUNTRY HAVEN STUDIO

OCT 22- REGULAR CARVING AT AMISKWACIY & COUNTRY HAVEN STUDIO

OCT 29- REGULAR CARVING AT AMISKWACIY & COUNTRY HAVEN STUDIO

NOV 5- REGULAR CARVING AT AMISKWACIY & COUNTRY HAVEN STUDIO

NOV 12- **NO CARVING AT AMISKWACIY** & REG CARVING AT COUNTRY HAVEN

NOV 19- REGULAR CARVING AT AMISKWACIY & COUNTRY HAVEN STUDIO

NOV 26- REGULAR CARVING AT AMISKWACIY & COUNTRY HAVEN STUDIO

DEC 3- REGULAR CARVING AT AMISKWACIY & COUNTRY HAVEN STUDIO

DEC 10- REGULAR CARVING AT AMISKWACIY & COUNTRY HAVEN STUDIO

## DEC 17- XMAS PARTY AT AMISKWACIY

### 2025

JAN 7- REGULAR CARVING AT AMISKWACIY

JAN 14- REGULAR CARVING AT AMISKWACIY

JAN 21- REGULAR CARVING AT AMISKWACIY

JAN 28- REGULAR CARVING AT AMISKWACIY

FEB 4- REGULAR CARVING AT AMISKWACIY & COUNTRY HAVEN STUDIO

FEB 11- REGULAR CARVING AT AMISKWACIY & COUNTRY HAVEN STUDIO

FEB 18- SCHOOL CLOSED NO CLASSES. & REG CARVING AT COUNTRY HAVEN STUDIO

FEB 25- REGULAR CARVING AT AMISKWACIY & COUNTRY HAVEN STUDIO

MAR 4- REGULAR CARVING AT AMISKWACIY & COUNTRY HAVEN STUDIO

MAR 11- REGULAR CARVING AT AMISKWACIY & COUNTRY HAVEN STUDIO

MAR 18- REGULAR CARVING AT AMISKWACIY & COUNTRY HAVEN STUDIO

MAR 25- NO CARVING (spring break) & REG CARVING AT COUNTRY HAVEN STUDIO

APR 1- REGULAR CARVING AT AMISKWACIY & COUNTRY HAVEN STUDIO

APR 4, 5, 6. THE BRANT CARVING SHOW QUALICUM BEACH CIVIC CENTRE

APR 8- REGULAR CARVING AT AMISKWACIY & COUNTRY HAVEN STUDIO

APR 15- REGULAR CARVING AT AMISKWACIY & COUNTRY HAVEN STUDIO

APR 18,19,20 PRAIRIE CANADA CARVING SHOW WINNIPEG

APR 22- REGULAR CARVING AT AMISKWACIY & COUNTRY HAVEN STUDIO

APR 25, 26, 27, 2025 WARD'S WORLDS OCEAN CITY

APR 29- AGM AT AMISKWACIY & COUNTRY HAVEN STUDIO

MAY 2, 3, 4<sup>TH</sup>. - IMAGES OF NATURE SHOW AT WHITECROFT HALL

MAY 6- FINAL CLEAN UP AND SIGN OUT AT AMISKWACIY

JUNE 7, & 8<sup>th</sup> CANADIAN NATIONAL WILDFOWL CARVING CHAMPIONSHIP  
WATERLOO, ONT.



## [AWCA Classified Ads](#)

### [AWCA Embroidered Clothing Line.](#)

The Alberta Wildlife Carving Association is pleased to offer our Embroidered Clothing Line to our members and friends. To place an order, please specify the Item Name, Style #, Colour, Size and Quantity Please Email the information to Elvin Smith at [elvin.smith@edmonton.ca](mailto:elvin.smith@edmonton.ca) Orders can be placed between Aug 15 and Oct 15 for delivery in November. Members can also place their order at the Tuesday Night Classes Up to Oct 15. Payment is due at time of order. See AWCA website [www.alberta.wildlifecarving.com](http://www.alberta.wildlifecarving.com) click AWCA EMBROIDERED CLOTHING for descriptions of items available and order form.

### [Images of Nature Garage Sale](#)

The Alberta Wildlife Carving Association conducts a “Garage Sale “at our Images of Nature Show the weekend before Mother’s Day each year. If you have tools, books or items of interest to carvers please consider putting them up for sale at our show. The AWCA charges a nominal fee of 10% for members and 20% for non-members for all items sold.

### [Maple & Bass](#)

We encourage all AWCA members to visit website for all your carving needs via:

[mapleandbass.com](http://mapleandbass.com).

Maple and Bass can be contacted toll-free by phone: 1-833-520-2277.

### [Alberta Carving Supplies](#)

We encourage all AWCA members to visit Alberta Carving Supply Store for all your carving needs see Glenn

Alberta Carving Supply Glenn can be contacted by phone: 780 907 0454.

Email: [gmaber@yahoo.com](mailto:gmaber@yahoo.com)

## GOLD PARTNERS



## SILVER PARTNERS



## AWCA Website

### NEW WEBSITE COMING SOON

The AWCA's most up to date information on an ongoing basis can be found in our website. The website can be reached online under "Alberta Wildlife Carving Association" or directly at <http://albertawildlifecarving.squarespace.com/>.